



**Wood Treatment and  
Preservation Products**

***We know wood rot  
and how to repair it!***

We are available 7 Days a week  
By Phone 206-364-2155  
and Email [drrot@rotdoctor.com](mailto:drrot@rotdoctor.com)

[Home](#) > [Product Line & Price List](#) > Sculpwood® Epoxy Paste



## Sculpwood® Epoxy Paste

### An Overview

SculpWood Epoxy Paste is a 2-component, solvent-free, epoxy resin product.

It is lightweight, strong, and exhibits excellent adhesion to a variety of substrates. Use them for repair of cracks, dings or other defects in rotted wood. It is easily sanded, and will accept paint, screws, and nails. It is frequently used in conjunction with System Three S-1 Sealer. Together, they make a high-quality, permanent, wood rot restoration system.

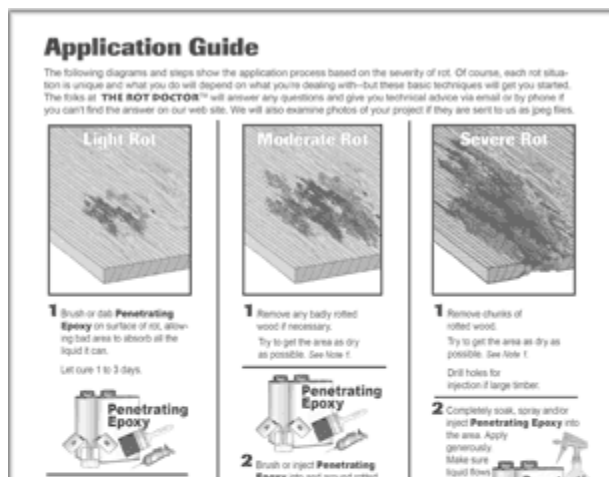
SculpWood Epoxy Paste bonds well with all clean fiberglass surfaces and can be used effectively to fill holes, cracks and depressions in the fiberglass. If applied to a smooth gel-coated surface, lightly sand the glass surface and wipe down with lacquer thinner or acetone before applying the SculpWood Epoxy Paste to the surface.

In addition, SculpWood Epoxy Paste bonds well to any properly prepared surface of wood, metal, glass and most plastics. There are some plastics that epoxies do not like to bond to, primarily in the polyethylene family. These are the types of plastics commonly used in margarine containers and Tupperware, as well as Saran Wrap-type plastic kitchen wrap. The best bonding surface is clean of oils or other contaminants, and scuff sanded with a scotch pad or medium grit sandpaper. SculpWood Epoxy Paste bonds exceptionally well to surfaces that have been treated with Penetrating Epoxies first.

### Easy Application Instructions

Ensure surfaces to be repaired are clean, free, of dust, grease, or dirt. Sand surface with 80-120 grit paper. Rotted wood should be dry, and treated with S-1 Sealer first. Measure and mix only enough SculpWood Epoxy Paste that can be applied in the indicated working time.

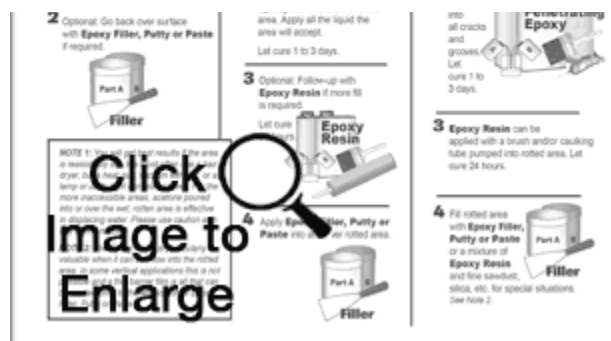
The two components are mixed 50:50 by volume to become a gel-like paste which may be faired and worked to a feathered edge. It cures overnight, and then can be carved, drilled without cracking, or primed/painted. Pilot holes for screws and nails will



need to be pre-drilled prior to the insertion of the fastener.

## Packaging

SculpWood Epoxy Paste is available in 4 oz, 2 Pint, 2 Quart and 2 Gallon units.



## Technical Data / Properties

Mix Ratio by Volume	1:1
Mix Ratio by Weight	1:1
Viscosity @ 77°F (25°C) cps	480K (Part A) 480K (Part B) / 480K (Mixed)
Density (lb. per gallon)	6.8 (Part A) 6.8 (Part B) / 6.8 (Mixed)
Color	Tan (Part A) Lt. Green (Part B) / Beige (Mixed)
Minimum Application Temperature	50°F (5°C)
Working Time @ 77°F (25°C)	40 Minutes (100g mixture)
Time to Sand	4 Hours (By hand or block) / 6 Hours (Machine sand)

## Tips and Techniques

For best results, apply at 50°F (5°C) or above.

Cure and recoating time will vary depending upon ambient conditions and the type of topcoat being applied. High humidity and/or low temperature will retard cure and recoat times.

Sculpwood Epoxy Paste is most easily mixed on a flat, smooth board. Equal amounts by volume are put on the board surface, and then folded, swirled and chopped until a consistent color is obtained. If the Sculpwood mix is going to be color-toned with our Epoxy Coloring Agent, the toning colorant can be added in small amounts after the epoxy is mixed. If you wish to mix by weight the ratio is equal part A to part B.

If required, the mix can be loaded into our re-usable caulking tubes for pumping into vacant areas. If the tip is cut off the tube nozzle first so it can vent air, the 10 oz caulking tube can be completely loaded with one of the tongue-depressors supplied with the Re-Usable Caulking Tube kits.

Best results using Sculpwood Epoxy Paste are obtained by first smearing a thin film against the surface, or if filling a cavity, working a small amount into all the holes and crevices with a putty knife, or the tip of the caulking tube. Additional material can then be added immediately to build the required thickness. For very large areas where sagging may occur, two or more applications may be necessary. Uncured Sculpwood Epoxy Paste may be smoothed by placing a thin film of

polyethylene over the material and using a squeegee or similar tool to smooth-out through the plastic. The plastic can be easily removed after the filler has cured. Sanding before painting is recommended.

In deep vertical or overhead applications the filler may sag away under its own weight. Fill to the point of sagging, allow to cure (see cure time chart below), and then come back and complete the fill.

***ALWAYS MIX THOROUGHLY!  
IMPROPER MIXING IS THE GREATEST CAUSE OF EPOXY SYSTEMS FAILURE.***

Sculpwood Epoxy Paste is a hazardous product. Check the [shipping options](#) page for details on shipping hazardous items. For additional information refer to the Sculpwood Epoxy Paste [Safety Data Sheet](#).



**The Rot Doctor, Inc.**  
**P.O. Box 30612**  
**Seattle, WA 98113**  
**Voice: 206.364.2155**  
**Fax: 206.364.4744**  
**E-mail: [drrot@rotdoctor.com](mailto:drrot@rotdoctor.com)**

Order by phone, fax, mail, or e-mail.



© 1997–2021 The Rot Doctor, Inc.

**All products ship within 2 business days from both coasts!**

**Our business hours are 6:30 AM to 5:30 PM Pacific Time, Monday–Friday.**

**Tech support is available over weekends and holidays.**